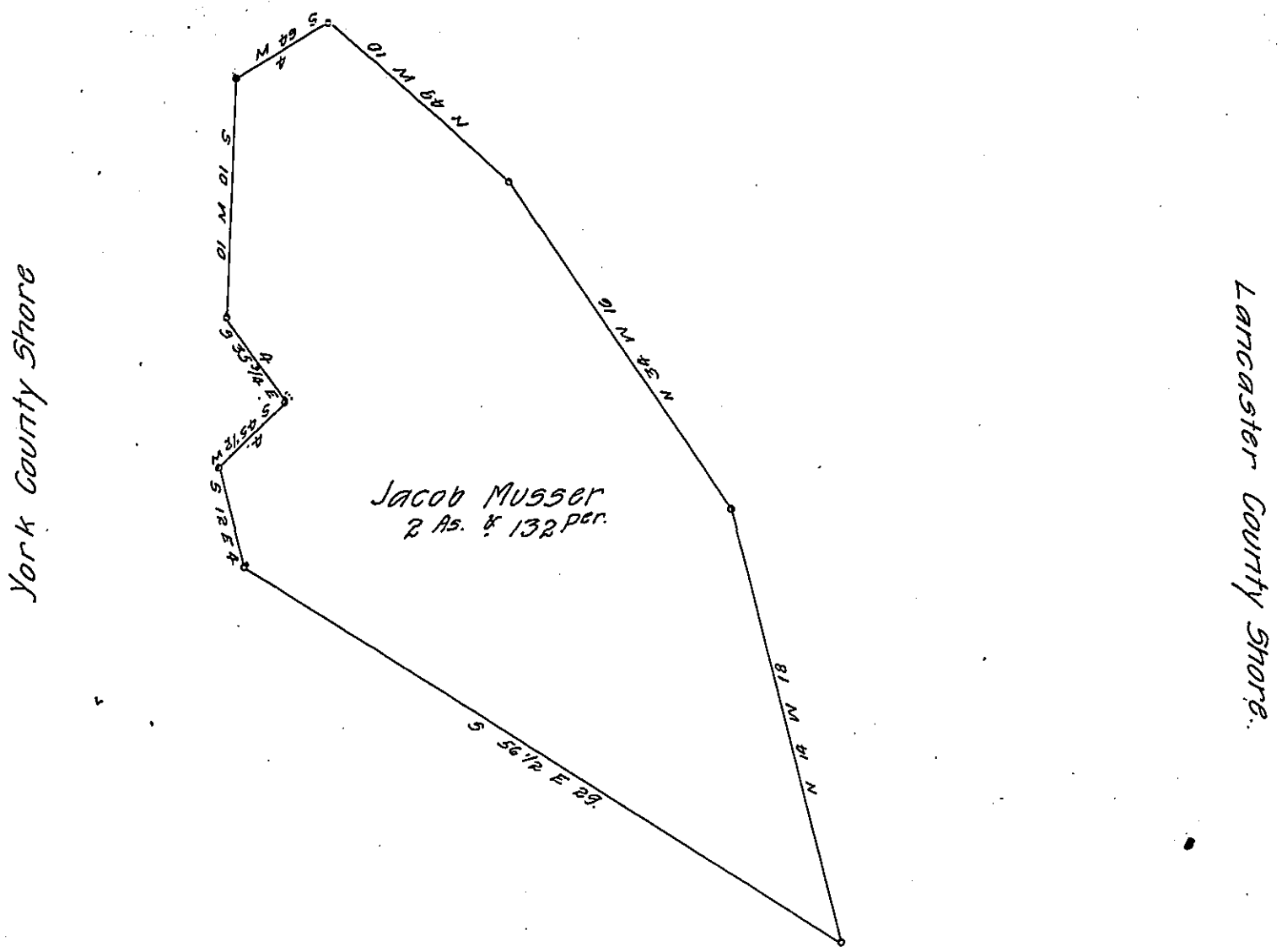


FORM NO 1.



A Draught of Rockey Island situate in the river Susquehanna in Manor township Lancaster County Opposite on the Lancaster side to lands of the heirs of Philip Sowers and on the York side to lands of the heirs of John Musser situate near the middle of the river and about one hundred yards from Maple Island Containing two acres and one hundred thirty two perches Strict measure Surveyed in pursuance of a warrant dated the 2nd day of August A. D. 1815 granted to Jacob Musser.

Per Jacob Hibshman. D.S.

To Jacob Spangler Esqr.
Surveyor General.

IN TESTIMONY that the above is a copy of the original remaining on file in the Department of Internal Affairs of Pennsylvania, made conformably to an Act of Assembly approved the 16th day of February, 1833, I have hereunto set my Hand and caused the Seal of said Department to be affixed at Harrisburg, this thirtieth day of November 1907.

Henry Houch
Secretary of Internal Affairs.